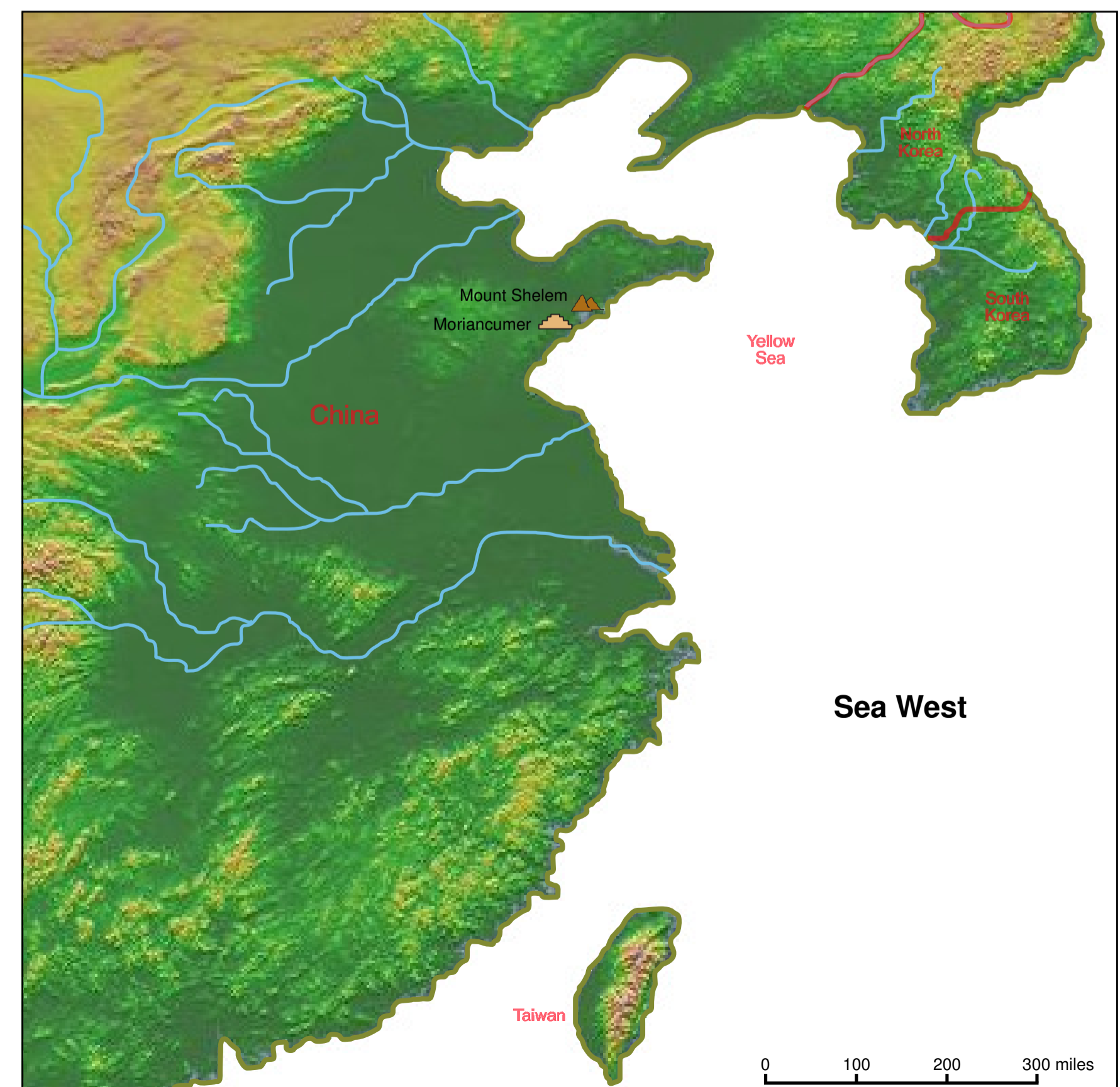
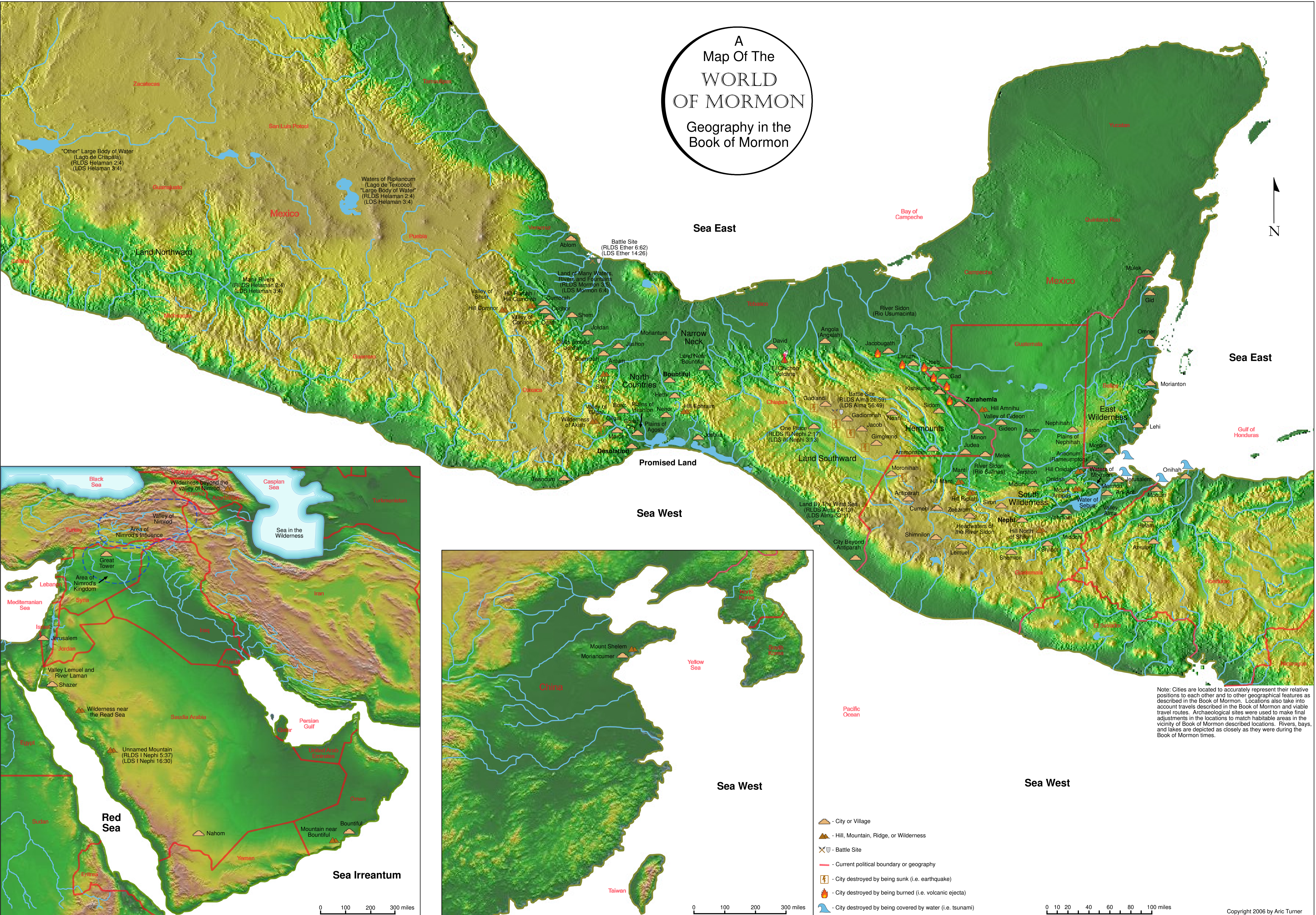


A
Map Of The
**WORLD
OF MORMON**
Geography in the
Book of Mormon



- City or Village
- Hill, Mountain, Ridge, or Wilderness
- Battle Site
- Current political boundary or geography
- City destroyed by being sunk (i.e. earthquake)
- City destroyed by being burned (i.e. volcanic ejecta)
- City destroyed by being covered by water (i.e. tsunami)

Note: Cities are located to accurately represent their relative positions to each other and to other geographical features as described in the Book of Mormon. Locations also take into account travels described in the Book of Mormon and viable travel routes. Archaeological sites were used to make final adjustments in the locations to match habitable areas in the vicinity of Book of Mormon described locations. Rivers, bays, and lakes are depicted as closely as they were during the Book of Mormon times.